

A photograph of two men in business suits standing in front of a modern glass building. The man on the right is older, with white hair and glasses, and is gesturing with his hands as if speaking. The man on the left is younger, with dark hair, and is listening attentively.

GSS-Web for Control-M

Monitor, Manage, and Report on your Control-M environment from any browser!

GSS Infotech has developed a web-enabled GUI for BMC Control-M based on customer demands and needs.

GSS-Web for Control-M makes it easy to publish your Control-M GUIs to your network or the Web. Without touching a single line of code, you can now instantly make your Control-M GUIs accessible to local and remote users, while retaining all of the features and functionality of Control-M.

GSS-Web for Control-M is a server based, thin client solution that eliminates the need for Windows Terminal Services and Citrix. It's optimized for reliable, secure, scalable application delivery to virtually any network-attached device, regardless of platform or operating system.

For maximum performance – and ease of deployment and maintenance; GSS-Web publishes only the Control-M GUIs, not the entire desktop. With our almost zero footprint client, only the application interface is delivered over the network and displayed on the remote devices.

Benefits

- Eliminates Firewall concerns between Client Workstation and Control-M/Enterprise Manager Server
- Eliminates the need for Windows Terminal Services and Citrix for Remote Access

Features

- Original Look and Feel of Control-M GUIs
- Publishes the Control-M GUI, not the entire desktop
- Utilizes standard Control-M and Operating System Security
- Customizable to your specific Needs

BMC Control-M Services

- Implementations
- Upgrades
- Integrations/Customizations
- Health Checks
- System Audits
- Staff Augmentation
- Remote Infrastructure Management
- Training
- Certified Service Provider and Reseller

About GSS Infotech

GSS Infotech provides enterprise level technology solutions that focus on driving business efficiency and reducing total cost of ownership. Founded in 1999, GSS Infotech operates worldwide through offices in the U.S., India and the Middle East. We provide customized and cost-effective solutions to customers, focusing on Infrastructure Management, Cloud Enablement and Application Development.

Contact Us

Tel: (877) 452 3700

e-mail: wlautomation@gssinfotech.com

Web: www.gssinfotech.com/bmc



GSS-Web for Control-M Capabilities

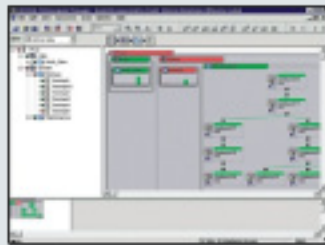
- Provides instant access to Control-M from any device or platform (UNIX, Linux, Windows), while retaining 100% of Control-M features and functions.
- Eliminates the need for Citrix MetaFrame, Microsoft Windows Terminal Services, costly rewrites, add-ons or extensions.
- Publish one or more Control-M GUIs, not the entire desktop.
- Integrates fully with existing platforms and management infrastructure
- Reduces costs, improves security, and simplifies remote access

GSS-Web for Control-M Features

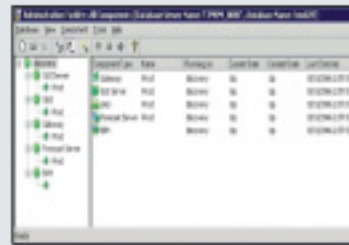
- Server-based solution with near-zero-footprint clients
- High performance over low-bandwidth connections
- Secure operation using native server security and fully-encrypted connections
- Complete cross-platform compatibility
- Local printing, files access and clipboard support
- Session reconnect and shadowing



Control-M Workload Automation



Control-M Reporting



Control-M Configuration Manager

NORTH AMERICA

GSS Infotech

2550 US Highway No 1, NJ-08902, USA
Tel: +1 888-248-5627, Fax: +1 866-726-0520
e-mail: northbrunswick@gssinfotech.com

1699 Wall Street, Suite 201, Mt. Prospect, IL 60056, USA
Tel: +1 847 640 3700, Fax: +1 847 640 3701
e-mail: chicago@gssinfotech.com

1762 Central Avenue, Albany, NY 12205, USA
Tel: +1 518 452 3700, Fax: +1 518 452 3939
e-mail: albany@gssinfotech.com

2842 Main Street, Glastonbury, CT 06033, USA
Tel: +1 860 633 7174, Fax: +1 860 633 7162
e-mail: glastonbury@gssinfotech.com

11875 Dublin Blvd, Suite # C155, Dublin, CA 94568, USA
Tel: +1 925 803 1117, Fax: +1 209 879 0162
e-mail: dublin@gssinfotech.com

INDIA

GSS Infotech

Cyber Pearl, Block - 2, Level - 5, Wing 05-01,
HITEC City, Madhapur, Hyderabad - 500 081. AP. India.
Tel: +91 40 44556600, Fax: +91 40 40028703
e-mail: india@gssinfotech.com

MIDDLE EAST

GSS Infotech

P.O. Box 73030, Dubai Internet City, Dubai, UAE.
Tel: +97 143 755 710, Fax: +97 143 672 786
e-mail: dubai@gssinfotech.com

Features & Functions	GSS-Web for Control-M Windows	Terminal Services	Citrix MetaFrame
Control-M GUIs	✓	✓	✓
Publishes Entire Desktop			
Publishes List of Control-M GUIs	✓	✓	✓
Requires Windows Terminal Services			
Transmits drawing commands and keyboard /mouse events only	✓		
Transmits less efficient screen bitmaps (screen scraping)			
Easy to Install, Configure, and Manage	✓		
Low memory and CPU usage			